

Operator's manual



**Snow plough
City Ranger 2260/2250**

Introduction

Dear Customer

Congratulations with your Egholm product

The City Ranger 2260/2250 is a Danish designed and manufactured product which offers a very flexible way of maintaining outdoor areas.

Optimal use of your City Ranger 2260/2250 Snow plough

To ensure the optimal performance of your City Ranger 2260/2250 snow plough, please read this operator's manual carefully before starting to use the machine. Failure to do so can result in personal injury and damage to the machine.

Safety

The Snow plough is equipped with various devices to ensure optimal operational safety both for the user and the surroundings. We therefore ask you to pay particular attention to Safety section 1.1. The machine must only be serviced by professionals.

The snow plough is designed only for use by professionals. On delivery, the user will receive thorough training to become a competent operator.

Do not lend the machine to anyone who has not been thoroughly trained and has not read this manual carefully.

The operator's manual should be considered a permanent part of the machine and so must remain with it if the machine is sold.

Warnings

Some items in this operator's manual are marked with this warning symbol.

The warning indicates areas where extra care has to be taken to avoid personal injury or damage to the machine and its accessories. The warning also shows what you should pay special attention to.



Reservations

As it is the Egholm policy to make continuous improvements, we reserve the right to alter the specifications and equipment at any time without notice. Nlfisk Outdoor accepts no liability for errors or omissions in the operator's manual.

Contact us

Should you have any questions regarding your Egholm product, do not hesitate to contact Egholm.

Best regards

Egholm A/S · Transportvej 27 · DK-7620 Lemvig

T. +45 97 81 12 05 · F. +45 97 81 12 10

E-mail: info@egholm.dk · www.egholm.eu



Egholm app - easy access to useful material

Download our Egholm app, enter the serial number of your machine and possibly add attachments, and get access to videos, manuals, technical specifications and much more.

If you agree to receive notifications, you will be notified about product and service information, offers etc. The app is available for Apple and Android mobile phones.

General information	5
1.1 Safety	5
1.2 EC Declaration of Conformity for Machinery	6
1.3 Technical data	7
Operator's manual	9
2.1 Assembly / Disassembly	9
2.2 Important before start-up	10
2.3 Start-up	10
2.4 Adjustment	11
Service and Maintenance	13
3.1 Cleaning	13
3.2 Maintenance	13
Conditions	16
4.1 Warranty	16
4.2 Complaint	17
4.3 Disposal	17
Notes	19

The snow plough truly shows the strength and power of the City Ranger 2260/2250. The machine, with its four-wheel drive and carefully designed weight distribution pushes snow effortlessly away.

Hydraulically adjustable, the snow plough pushes the snow to whichever side you choose, and can be ingeniously combined with the salt and sand spreader to make icy patches safe at the same time.

To protect both the surface and the machine, the snow plough is fitted as standard with a safety tilt system and a rubber scraping edge.

The rubber scraping edge is ideal for use with melting snow and also scrapes the surface thoroughly without damaging it.

Useful tips

Adjust the skids according to surface conditions.

In case of many raised edges, set the skids high so they do not cut into the edges.

Use the snow plough for big drifts. The snow plough removes most of the snow. The snow sweeper finishes off the job.

Ensure the snap couplings are clean before fitting, as this protects the hydraulic system.

Daily cleaning and maintenance will extend the lifetime of both the machine and the attachment.

General information

**Honest
Machines**

General information

1.1 Safety



Make sure no one is standing close to the machine while it is in use

Make sure that no one is near the machine while it is in use as there is a danger of crushing.



Attention

As it is articulated, the rear end of the machine swings out when turning. Make sure that no one is standing near the machine while it is in use. (Picture 1)



The snow plough swings to the side when the joystick is moved left or right. Make sure that no one is standing near the machine while it is in use. (Picture 2)



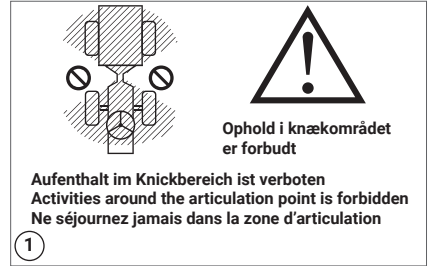
Avoid crushing fingers

Keep your hands and fingers away from areas where there is a danger of crushing.



Avoid roll-overs

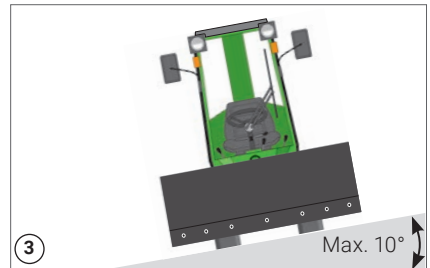
Do not drive the machine in a place where it can slide, tip or roll. Do not drive on slopes with an incline of more than 10°. (Picture 3)



Prevent people from standing in the working area



Joystick



Do not drive on slopes with an incline of more than 10°

General information

1.2 EC Declaration of Conformity for Machinery

Manufacturer: **Egholm A/S**
Address: **Transportvej 27 · DK-7620 Lemvig**
Telephone: **+45 97 81 12 05**

herby declares that

Machine: **Snow plough**
Type: **22DZ13**

· has been manufactured in conformity with the provisions of the Machinery, Directive 2006/42/EU

Any alteration, rebuilding or addition of implements, accessories or other equipment not manufactured by Egholm automatically results in the cancellation of type approval, CE approval, any other approval, as well as any warranty on machine and attachments.

Unless otherwise agreed in writing between the operator, customer and Egholm, Egholm is the data originator (data originator) of all data generated by the machine and attachments during use.

Place: Lemvig
Date: _____
Signature: 

Rainer Flanz, R&D Manager

General information

1.3 Technical data

Dimensions	Assembled	Storage dimensions
Length (L).....	2,850 mm	500 mm
Width (W).....	1,300 mm.....	1,300 mm
Height with cab (H)	1,960 mm.....	545 mm

Technical data

Type description	22DZ13
Weight of Snow plough	66 kg
Clearing width	1,300 mm
Ground clearance below scraping edge, lifted	420 mm
Ground clearance below skids, lifted	370 mm
Adjuster discs per skid	8

Attention

Specifications may be changed without prior notice

Operator's manual

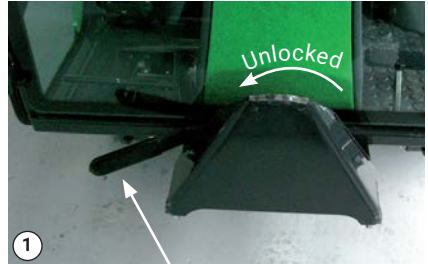
**Honest
Machines**

2.1 Assembly / Disassembly

1. The locking handle on the A-frame of the basic machine must be in the unlocked position. (Picture 1)
2. Drive the basic machine right up to the A-frame of the snow plough, so the A-frames fit into each other. (Picture 2)
3. Raise the A-frame by pulling the joystick back until the snow plough is suspended and free of the ground.
4. Stop the machine.
5. Lock the snow plough in place with the locking handle on the A-frame. (Picture 3) The locking handle can only be engaged when the machine has been stopped.

Disassembly

Follow the procedure for fitting in reverse order.



Locking handle



Attaching



Locking

Operator's manual

2.2 Important before start-up

During transport

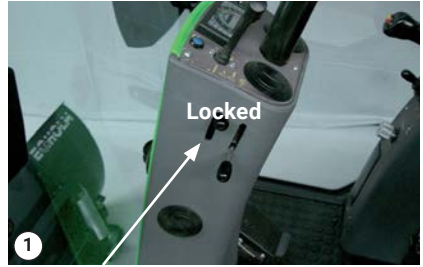
Lock the snow plough in the raised position using the transport lock. This prevents the equipment from lowering during transport.

How to use the transport lock

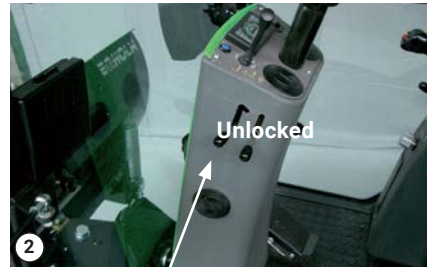
Move the handle into the uppermost position. Lift the A-frame by moving the joystick up. As the A-frame lifts the transport lock is automatically activated. (Picture 1)

How to use the transport lock

Unhitch the handle and lift the A-frame to uppermost position. The equipment can now be lowered again. (Picture 2)



Transport lock in locked position



Transport lock

2.3 Start-up

1. Start the machine.

2. Lower the snow plough by moving the joystick down. (Picture 3)

3. Activate the weight distribution with the red button on the joystick. (Picture 4) The snow plough will now adjust to ground conditions. To adjust the weight distribution read the operator's manual for the basic City Ranger 2260/2250 machine.

4. Turn the snow plough by moving the joystick to the left or to the right. The snow plough swings in the same direction as the joystick.



Joystick



Weight distribution



Attention

Make sure no one is standing close to the machine while it is in use.



N.B

When turning, the rear of the machine swings out, so there is a risk of crushing or collision.

2.3 Start-up - continued



Warning

Collision with solid obstacles – such as kerbstones – may damage the snow plough. This damage may cause bolts to snap or parts of the snow plough to bend. Damage of this type is not covered by the warranty.



The snow plough is raised using the joystick

2.4 Adjustment

Adjust the skids according to surface conditions. If there are a lot of raised edges set the skids high so they do not cut into the edges.

The scraping height is adjusted by changing the number of adjuster discs between the skid and the scraper guard.

Adjusting the scraping height

1. Raise the snow plough by pulling the joystick up. (Picture 1)

2. Lock the snow plough in the raised position with the transport lock. (Picture 2)

3. Stop the machine.

4. Remove the locking ring on the skid, take off the skid and place the required number of adjusting discs between the skid and the scraper guard (the same number on both skids). (Picture 3)

5. Fit the skid and put the remaining adjuster discs on the skid above the scraper guard.

6. Put the locking ring back on the skid.



Transport lock



Adjuster discs

Remaining adjuster discs

Service and maintenance

**Honest
Machines**

Service and Maintenance

3.1 Cleaning

Daily cleaning and maintenance will extend the lifetime of both the machine and the attachment.

After use clean the snow plough with clean water. Avoid high pressure cleaning of the snap couplings.

Open the flap over the snap couplings. Use pressurised air to clean around the snap couplings. The couplings can be dried with a cloth. (Picture 1) It is important the couplings are intact before the attachment is taken off.



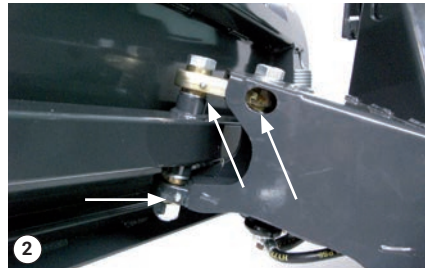
Snap couplings

3.2 Maintenance

Lubricating the bearings

The bearings in the pivot joint of the snow plough should be greased regularly with good quality grease.

1. Stop the machine.
2. Clean the lubricating nipples and lubricate the bearings until the grease starts to come out of the bearing. (Picture 2)



Location of lubrication nipples

Replacing the scraping edge

The scraper at most can be worn down to the scraper guard.

1. Lift the snow plough to the uppermost position and lock with the transport lock. (See 2.2)
2. Stop the machine.
3. Remove the nuts and bolts holding the scraper edge and remove the scraper edge. (Picture 3)



Nuts holding the scraper edge

4. Fit the new scraper edge by reversing the procedure.
- New scraper edges and skids can be ordered from an authorised Egholm distributor.

Service and Maintenance

3.2 Maintenance - continued

Storage outside the season

When the snow plough is to be stored outside the season, it is recommended to remove any loose paint and to repaint any damaged areas.

It is recommended the equipment is greased / sprayed with protective lubricant.

Conditions

**Honest
Machines**

Conditions

4.1 Warranty

The warranty period for the materials and manufacture of this snow plough is 12 months from the date of purchase. In case of errors or defects on the machine within the warranty period, Egholm will carry out the necessary repairs at no charge to the customer, including materials and working hours, in accordance with the terms and conditions listed below.

The scope of warranty

1. The Egholm warranty is only valid on presentation of the original receipt supplied with model description, serial number and date of purchase.
2. Regular checks, adjustments, services and technical alterations are not covered by the warranty.
3. All inquiries concerning the warranty are to be addressed to the place where the machine was purchased.
4. This warranty does not cover faults and defects which cannot be traced back to defects in material or production errors.
5. This warranty is valid for persons who have legally acquired the machine within the warranty period.
6. In the event of failure to perform and substantiate service in accordance with the applicable instructions, Egholm reserves the right to reject any claim made within the warranty period.
7. Egholm reserves the right to make improvements and design-related alterations to the machine without being obliged to modify previously delivered models in relation hereto.

The warranty does not cover

- Wear and tear, accidents, damage to the equipment caused by operating errors, changes to the construction of the machine or use of non-Egholm spare parts or attachments.
- Machines with illegible serial numbers.
- Damage cause by force majeure such as lightning, flood, fire, war, civil disturbance etc., or other causes over which Egholm has no control.

4.2 Complaint

All inquiries regarding the machine should be made at the distributor from whom the machine was purchased. This applies to inquiries concerning normal use, service, maintenance and spare parts as well as any complaints.

We wish you many years of safe and satisfied use of your machine.

Best regards
Egholm A/S

4.3 Disposal

When – in many years from now – your snow plough has reached the end of its working life it should be disposed of in a responsible manner and in compliance with the relevant disposal regulations.

1. Used hydraulic oil is to be disposed of at an approved waste disposal facility or site.
2. Remove all plastic and rubber parts and dispose of.
3. After the parts mentioned have been removed, the machine is ready to be handed over to an approved scrap merchant.

Notes

Honest Work.

Egholm A/S
Transportvej 27
7620 Lemvig, Denmark
T.: +45 97 81 12 05
www.egholm.eu - info@egholm.dk